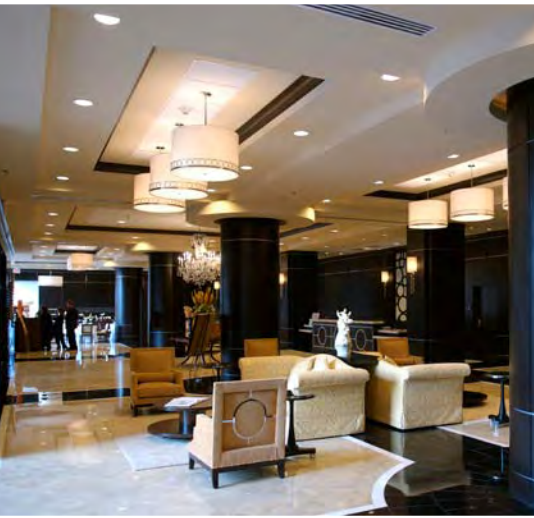
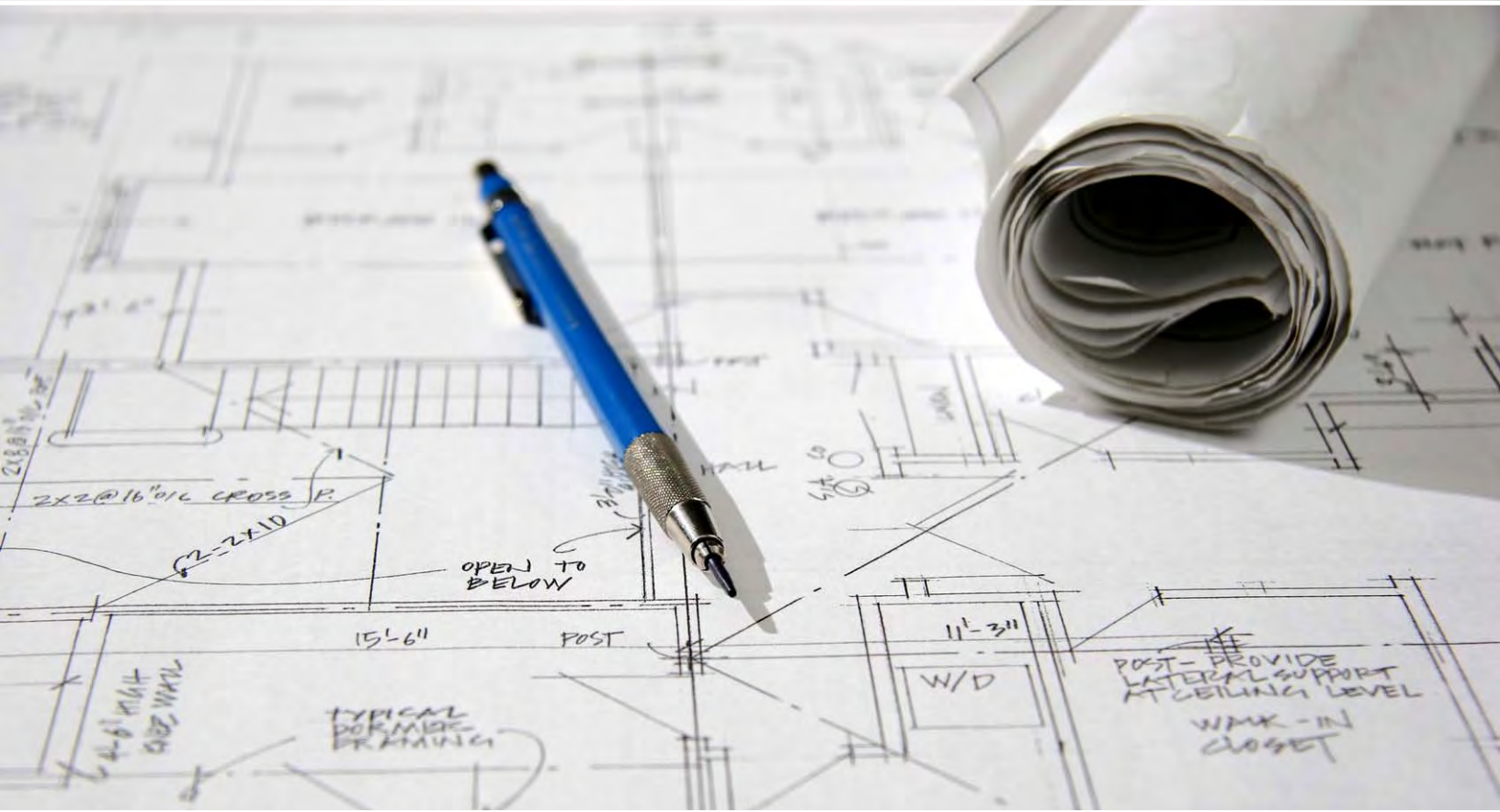
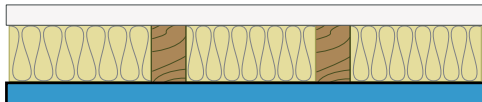


SERIOUS ENERGY



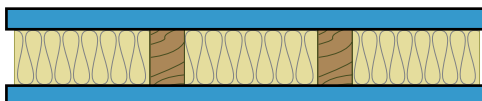
Acoustic and Fire Assemblies Product Selection Guide

Single Wood Stud Walls



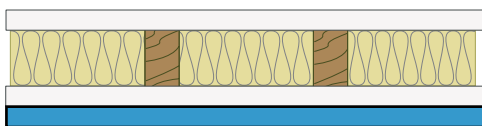
- QuietRock on one side
- 2x4 wood studs spaced 24" OC with 3-1/2" batt insulation
- 5/8" Type X on the other

	Model	STC	STC Report #	Fire	UL/ULC Design #	Panel thickness	Assembly Thickness
EZ-SNAP	ES	51	OL11-0319	UL, 1 hour	U309 ¹	5/8"	4-3/4"
	ES MR	51	OL11-0319	UL, 1 hour	U309 ¹	5/8"	4-3/4"
SPECIALTY	510	49	TL07-021	-	-	1/2"	4-5/8"
	525	51	TL07-019	UL, 1 hour	U386, W317	5/8"	4-3/4"
	527	50	TL10-126	UL, 1 hour	U309 ¹	5/8"	4-3/4"
	528	50	TL07-017	UL, 1 hour	U386, W317	5/8"	4-3/4"
	530	52	TLA-04-050 ²	UL, 1 hour	U309 ¹ , U376 ¹ , U386, W313 ¹ , W317	5/8"	4-3/4"
	545	56	est.	-	-	1-3/8"	5-1/2"



- QuietRock on both sides
- 2x4 wood studs spaced 24" OC with 3-1/2" batt insulation

	Model	STC	STC Report #	Fire	UL/ULC Design #	Panel thickness	Assembly Thickness
EZ-SNAP	ES	54	OL11-0320	UL, 1 hour	U309 ¹	5/8"	4-3/4"
	ES MR	54	OL11-0320	UL, 1 hour	U309 ¹	5/8"	4-3/4"
SPECIALTY	510	52	TL07-022	-	-	1/2"	4-1/2"
	525	55	TL07-020	-	-	5/8"	4-3/4"
	527	54	est.	UL, 1 hour	U309 ¹	5/8"	4-3/4"
	528	54	TL07-018	UL, 1 1/2 hour	U385, W318	5/8"	4-3/4"
	530	54	TLA-04-036	UL, 1 hour	U376 ¹ , W313 ¹	5/8"	4-3/4"
	545	60	TLA-05-048	-	-	1-3/8"	6-1/4"



- QuietRock over 5/8" Type X on one side
- 2x4 wood studs spaced 24" OC with 3-1/2" batt insulation
- 5/8" Type X on the other

	Model	STC	STC Report #	Fire	UL/ULC Design #	Panel thickness	Assembly Thickness
EZ-SNAP	ES	49	est.	UL, 1 hour	U309 ¹	5/8"	5-3/8"
	ES MR	49	est.	UL, 1 hour	U309 ¹	5/8"	5-3/8"
SPECIALTY	510	47	TL06-133	UL, 1 hour	U309 ¹	1/2"	5"
	525	49	TLA-05-052	UL, 1 hour	U386, W317	5/8"	5-3/8"
	527	49	est.	UL, 1 hour	U309 ¹	5/8"	5-3/8"
	528	49	est.	UL, 1 hour	U386, W317	5/8"	5-3/8"
	530	53	TLA-04-051 ²	UL, 1 hour	U309 ¹ , U376 ¹ , U386, W313 ¹ , W317	5/8"	5-3/8"
	545	58	est.	1 hour	-	1-3/8"	6-1/8"

¹ Load bearing wall assembly. *STC ratings for QuietRock 510 on retrofit wood stud construction are given on 1/2" gypsum panels.

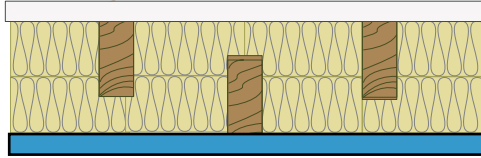
² 5/8" Type C gypsum used instead of Type X

QuietRock sound damping drywall and other acoustical products available from Serious Energy. Visit www.QuietRock.com for more information.

All QuietRock and QuietWood panels are manufactured under one or more of the following US Patents: 7,181,891, 7,798,287 & 7,883,763.

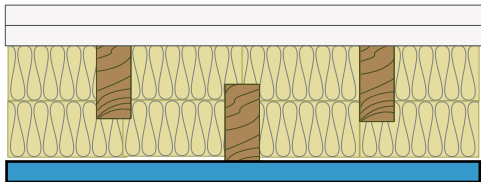
The information contained in this document is for general information purposes only. Features and specifications are subject to change. The diagrams and stated STC ratings listed are intended to serve as a guide. Construction practices have an influence on final STC ratings. Serious Energy cannot guarantee actual STC ratings. Flanking sound patterns, the integrity of the wall, and floor and ceiling construction are important factors in effective sound control.

Staggered Wood Stud Walls



- QuietRock on one side
- 2x4 wood studs spaced 8" OC on 6" plates with 6" minimum batt insulation
- 5/8" Type X on the other

	Model	STC	STC Report #	Fire	UL/ULC Design #	Panel thickness	Assembly Thickness
EZ-SNAP	ES	55	TL10-120	UL, 1 hour	U3401, U3761, U386, W3131, W317	5/8"	6-3/4"
	ES MR	55	TL10-120	UL, 1 hour	U3401, U3761, U386, W3131, W317	5/8"	6-3/4"
SPECIALTY	510	54	est.	-	-	1/2"	6-5/8"
	525	57	est.	UL, 1 hour	U386, W317	5/8"	6-3/4"
	527	57	TL10-123	UL, 1 hour	U3401, U3761, U386, W3131, W317	5/8"	6-3/4"
	528	57	est.	UL, 1 hour	U386, W317	5/8"	6-3/4"
	530	57	est.	UL, 1 hour	U3401, U3761, U386, W3131, W317	5/8"	6-3/4"
	545	64	est.	-	-	1-3/8"	7-1/2"



- QuietRock on one side
- 2x4 wood studs spaced 8" OC on 6" plates with 3-1/2" minimum batt insulation
- 2 layers 5/8" Type X on the other

	Model	STC	STC Report #	Fire	UL/ULC Design #	Panel thickness	Assembly Thickness
EZ-SNAP	ES	60	TL10-121	UL, 1 hour	U3901, U3761, U5861, W3131, W317	5/8"	7-3/8"
	ES MR	60	TL10-121	UL, 1 hour	U3901, U3761, U5861, W3131, W317	5/8"	7-3/8"
SPECIALTY	510	58	est.	-	-	1/2"	7-1/4"
	525	59	est.	UL, 1 hour	U386, W317	5/8"	7-3/8"
	527	59	TL10-122	UL, 1 hour	U3901, U3761, U5861, W3131, W317	5/8"	7-3/8"
	528	59	est.	UL, 1 1/2 hour	U385, W318	5/8"	7-3/8"
	530	59	est.	UL, 1 hour	U3401, U3761, W3131	5/8"	7-3/8"
	545	67	est.	-	-	1-3/8"	8-1/8"

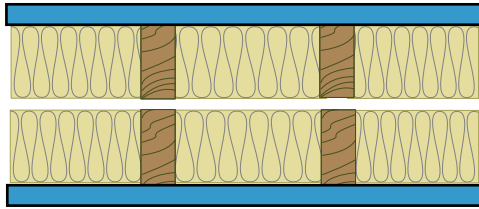
¹ Load bearing wall assembly.

QuietRock sound damping drywall and other acoustical products available from Serious Energy. Visit www.QuietRock.com for more information.

All QuietRock and QuietWood panels are manufactured under one or more of the following US Patents: 7,181,891, 7,798,287 & 7,883,763.

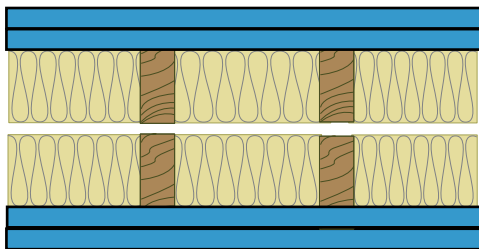
The information contained in this document is for general information purposes only. Features and specifications are subject to change. The diagrams and stated STC ratings listed are intended to serve as a guide. Construction practices have an influence on final STC ratings. Serious Energy cannot guarantee actual STC ratings. Flanking sound patterns, the integrity of the wall, and floor and ceiling construction are important factors in effective sound control.

Double Wood Stud Walls



- QuietRock on both sides
- 2x4 wood studs spaced 24" OC, 3" min. air gap with 9-1/2" batt insulation

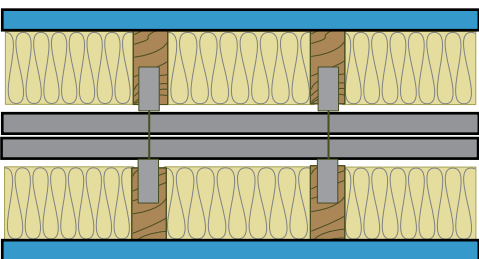
	Model	STC	STC Report #	Fire	UL/ULC Design #	Panel thickness	Assembly Thickness
EZ-SNAP	ES	65	est.	UL, 1 hour	U3411, U3761, W3131	5/8"	11-1/4"
	ES MR	65	est.	UL, 1 hour	U3411, U3761, W3131	5/8"	11-1/4"
SPECIALTY	510	63	est.	-	-	1/2"	11"
	525	65	TLA-05-0592	-	-	5/8"	11-1/4"
	527	65	est.	UL, 1 hour	U3411, U3761, W3131	5/8"	11-1/4"
	528	65	est.	UL, 1 1/2 hour	U385, W318	5/8"	11-1/4"
	530	66	TLA-04-033	UL, 1 hour	U3411, U3761, W3131	5/8"	11-1/4"
	545	75	TLA-05-040	-	-	1-3/8"	12-3/4"



- Double layer QuietRock on both sides
- 2x4 wood studs spaced 24" OC, 3" min. air gap with 9-1/2" batt insulation

	Model	STC	STC Report #	Fire	UL/ULC Design #	Panel thickness	Assembly Thickness
EZ-SNAP	ES	73	est.	UL, 1 hour	U3411, U3761, W3131	5/8"	12-1/2"
	ES MR	73	est.	UL, 1 hour	U3411, U3761, W3131	5/8"	11-1/4"
SPECIALTY	510	71	est.	-	-	1/2"	12"
	525	73	est.	-	-	5/8"	12-1/2"
	527	73	est.	UL, 1 hour	U3411, U3761, W3131	5/8"	12-1/2"
	528	73	est.	UL, 1 1/2 hour	U385, W318	5/8"	12-1/2"
	530	74	TLA-04-034	UL, 1 hour	U3411, U3761, W3131	5/8"	12-1/2"
	545	80	TLA-05-043	-	-	1-3/8"	15-1/2"

Two Hour Separation Wall



- One layer of QuietRock on both outer walls
- 1" fire-shield shaft liner material both sides
- Double 2x4 wood studs spaced 16" OC with 3-1/2" batt insulation on both sides

	Model	STC	STC Report #	Fire	UL/ULC Design #	Panel thickness	Assembly Thickness
SPECIALTY	510	69	TL07-119	UL, 2 hours	U3471	1/2"	11-1/2"
	525	70	TL07-120	UL, 2 hours	U3471	5/8"	11-3/4"

¹Load bearing wall assembly.

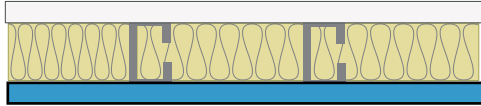
²Tested with double 2x4 wood studs 16" OC, a 3" air gap, and 3-1/2" batt insulation on both sides.

QuietRock sound damping drywall and other acoustical products available from Serious Energy. Visit www.QuietRock.com for more information.

All QuietRock and QuietWood panels are manufactured under one or more of the following US Patents: 7,181,891, 7,798,287 & 7,883,763.

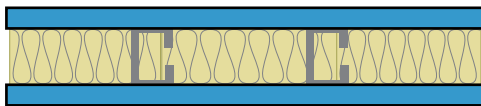
The information contained in this document is for general information purposes only. Features and specifications are subject to change. The diagrams and stated STC ratings listed are intended to serve as a guide. Construction practices have an influence on final STC ratings. Serious Energy cannot guarantee actual STC ratings. Flanking sound patterns, the integrity of the wall, and floor and ceiling construction are important factors in effective sound control.

3-5/8" 25 Gauge Single Steel Stud Walls 24" OC



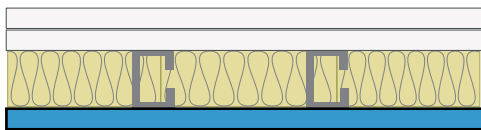
- QuietRock on one side
- 3-1/2" batt insulation
- 5/8" Type X on the other

	Model	STC	STC Report #	Fire	UL/ULC Design #	Panel thickness	Assembly Thickness
EZ-SNAP	ES	55	OL11-0333	UL, 1 hour	U465	5/8"	4-7/8"
	ES MR	55	OL11-0333	UL, 1 hour	U465	5/8"	4-7/8"
SPECIALTY	510	51	est.	-	-	1/2"	4-5/8"
	525	55	TL07-028	-	-	5/8"	4-7/8"
	527	55	TL07-069	UL, 1 hour	W460, V463, W459, V464, U465	5/8"	4-7/8"
	528	56	TL07-027	UL, 1 hour	V463, W459	5/8"	4-7/8"
	530	53	est.	UL, 1 hour	W460, V463, W459, V464	5/8"	4-7/8"
	545	62	est.	-	-	1-3/8"	5-5/8"



- QuietRock on both side
- 3-1/2" batt insulation

	Model	STC	STC Report #	Fire	UL/ULC Design #	Panel thickness	Assembly Thickness
EZ-SNAP	ES	57	OL11-0329	UL, 1 hour	U465	5/8"	4-7/8"
	ES MR	57	OL11-0329	UL, 1 hour	U465	5/8"	4-7/8"
SPECIALTY	510	55	est.	-	-	1/2"	4-5/8"
	525	57	TL07-029	-	-	5/8"	4-7/8"
	527	56	TL07-076	UL, 1 hour	U465, V463, V464, W459, W460	5/8"	4-7/8"
	528	58	TL07-026	UL, 1 hour	V463, W459	5/8"	4-7/8"
	530	55	TLA-05-050	UL, 1 hour	W460, V463, W459, V464	5/8"	4-7/8"
	545	67	est.	-	-	1-3/8"	6-3/8"



- QuietRock on one side
- 3-1/2" batt insulation
- 2 layers 5/8" Type X on the other

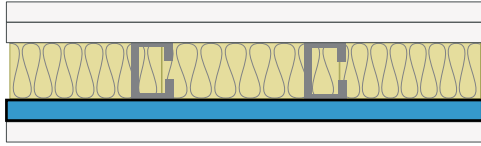
	Model	STC	STC Report #	Fire	UL/ULC Design #	Panel thickness	Assembly Thickness
EZ-SNAP	ES	60	OL11-0334	UL, 1 hour	U465, V463, V464, W459, W460	5/8"	5-1/2"
	ES MR	60	OL11-0334	UL, 1 hour	U465	5/8"	4-7/8"
SPECIALTY	510	54	est.	-	-	1/2"	5-3/8"
	525	60	est.	-	-	5/8"	5-1/2"
	527	60	est.	UL, 1 hour	U465, V463, V464, W459, W460	5/8"	5-1/2"
	528	61	est.	UL, 1 hour	V463, W459	5/8"	5-1/2"
	530	58	est.	UL, 1 hour	V463, V464, W459, W460	5/8"	5-1/2"
	545	65	est.	-	-	1-3/8"	6-1/4"

QuietRock sound damping drywall and other acoustical products available from Serious Energy. Visit www.QuietRock.com for more information.

All QuietRock and QuietWood panels are manufactured under one or more of the following US Patents: 7,181,891, 7,798,287 & 7,883,763.

The information contained in this document is for general information purposes only. Features and specifications are subject to change. The diagrams and stated STC ratings listed are intended to serve as a guide. Construction practices have an influence on final STC ratings. Serious Energy cannot guarantee actual STC ratings. Flanking sound patterns, the integrity of the wall, and floor and ceiling construction are important factors in effective sound control.

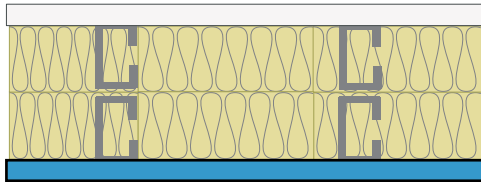
3-5/8" 25 Gauge Single Steel Stud Walls 24" OC



- 5/8" Type X over QuietRock on one side
- 3-1/2" batt insulation
- 2 layers 5/8" Type X on the other

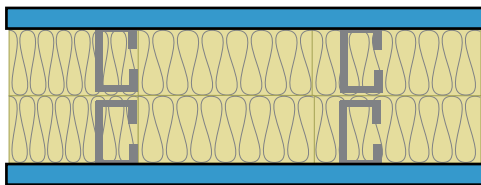
	Model	STC	STC Report #	Fire	UL/ULC Design #	Panel thickness	Assembly Thickness
EZ-SNAP	ES	62	est.	UL, 1 or 2 hour	U465, V419 ,V463, V464, W459, W460	5/8"	6-1/8"
	ES MR	62	est.	UL, 1 or 2 hour	U465, V419 ,V463, V464, W459, W460	5/8"	6-1/8"
SPECIALTY	510	56	TL07-031	UL, 1 hour	U465, U473	1/2"	6"
	525	62	est.	1 hour	-	5/8"	6-1/8"
	527	62	est.	UL, 1 or 2 hour	U465, V419 ,V463, V464, W459, W460	5/8"	6-1/8"
	528	63	est.	UL, 1 hour	V463, W459	5/8"	6-1/8"
	530	60	est.	UL, 1 hour	V463, V464, W459, W460	5/8"	6-1/8"
	545	67	est.	1 hour	-	1-3/8"	6-7/8"

3-5/8" 25 Gauge Double Steel Stud Walls 24" OC



- QuietRock on one side
- 1" min air gap with 3-1/2" batt insulation on both sides
- 5/8" Type X on the other

	Model	STC	STC Report #	Fire	UL/ULC Design #	Panel thickness	Assembly Thickness
EZ-SNAP	ES	64	est.	UL, 1 hour	V463, V464, W459, W460	5/8"	9-1/4"
	ES MR	64	est.	UL, 1 hour	V463, V464, W459, W460	5/8"	9-1/4"
SPECIALTY	510	62	est.	-	-	1/2"	9"
	525	64	est.	-	-	5/8"	9-1/4"
	527	64	TL07-392	UL, 1 hour	V463, V464, W459, W460	5/8"	9-1/4"
	528	65	est.	UL, 1 hour	V463, V464, W459, W460	5/8"	9-1/4"
	530	64	est.	UL, 1 hour	V463, V464, W459, W460	5/8"	9-1/4"
	545	70	est.	-	-	1-3/8"	10"



- QuietRock on both sides
- 1" min air gap with 3-1/2" batt insulation both sides

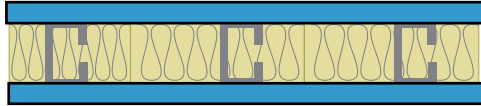
	Model	STC	STC Report #	Fire	UL/ULC Design #	Panel thickness	Assembly Thickness
EZ-SNAP	ES	65	est.	UL, 1 hour	V463, V464, W459, W460	5/8"	9-1/4"
	ES MR	65	est.	UL, 1 hour	V463, V464, W459, W460	5/8"	9-1/4"
SPECIALTY	510	63	est.	-	-	1/2"	9"
	525	65	est.	-	-	5/8"	9-1/4"
	527	65	TL07-391	UL, 1 hour	V463, V464, W459, W460	5/8"	9-1/4"
	528	66	est.	UL, 1 hour	V463, V464, W459, W460	5/8"	9-1/4"
	530	65	est.	UL, 1 hour	V463, V464, W459, W460	5/8"	9-1/4"
	545	74	est.	-	-	1-3/8"	10-3/4"

QuietRock sound damping drywall and other acoustical products available from Serious Energy. Visit www.QuietRock.com for more information.

All QuietRock and QuietWood panels are manufactured under one or more of the following US Patents: 7,181,891, 7,798,287 & 7,883,763.

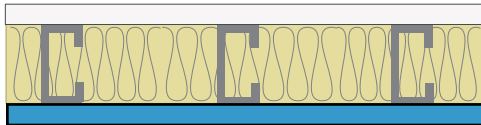
The information contained in this document is for general information purposes only. Features and specifications are subject to change. The diagrams and stated STC ratings listed are intended to serve as a guide. Construction practices have an influence on final STC ratings. Serious Energy cannot guarantee actual STC ratings. Flanking sound patterns, the integrity of the wall, and floor and ceiling construction are important factors in effective sound control.

Heavy-Gauge Single Steel Stud Wall 16" OC



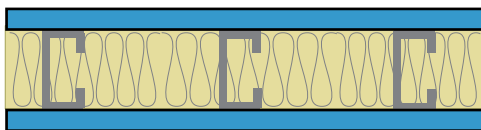
- QuietRock on both sides
- 3-5/8" 16-ga. steel studs spaced 16" OC with 3-1/2" batt insulation

	Model	STC	STC Report #	Fire	UL/ULC Design #	Panel thickness	Assembly Thickness
EZ-SNAP	ES	48	TL10-394	UL, 1 hour	U4251, U465, V463, V464, W459, W460	5/8"	4-7/8"
	ES MR	48	TL10-394	UL, 1 hour	U4251, U465, V463, V464, W459, W460	5/8"	4-7/8"
SPECIALTY	510	44	est.	-	-	1/2"	4-5/8"
	525	48	est.	-	-	5/8"	4-7/8"
	527	48	est.	UL, 1 hour	U4251, U465, V463, V464, W459, W460	5/8"	4-7/8"
	528	48	est.	UL, 1 hour	V463, W459	5/8"	4-7/8"
	530	48	est.	UL, 1 hour	V463, V464, W459, W460	5/8"	4-7/8"
	545	55	est.	-	-	1-3/8"	5-5/8"



- QuietRock on one side
- 6" 16-ga. steel studs spaced 16" OC with 6" batt insulation
- 5/8" Type X on the other

	Model	STC	STC Report #	Fire	UL/ULC Design #	Panel thickness	Assembly Thickness
EZ-SNAP	ES	49	TL10-398	UL, 1 hour	U4251, U465, V463, V464, W459, W460	5/8"	7-1/4"
	ES MR	49	TL10-398	UL, 1 hour	U4251, U465, V463, V464, W459, W460	5/8"	7-1/4"
SPECIALTY	510	45	est.	-	-	1/2"	7-1/8"
	525	49	est.	-	-	5/8"	7-1/4"
	527	49	est.	UL, 1 hour	U4251, U465, V463, V464, W459, W460	5/8"	7-1/4"
	528	49	est.	UL, 1 hour	V463, W459	5/8"	7-1/4"
	530	49	est.	UL, 1 hour	V463, V464, W459, W460	5/8"	7-1/4"
	545	56	est.	-	-	1-3/8"	8"



- QuietRock on both sides
- 6" 16-ga. steel studs spaced 16" OC with 6" batt insulation

	Model	STC	STC Report #	Fire	UL/ULC Design #	Panel thickness	Assembly Thickness
EZ-SNAP	ES	53	TL10-399	UL, 1 hour	U4251, U465, V463, V464, W459, W460	5/8"	7-1/4"
	ES MR	53	TL10-399	UL, 1 hour	U4251, U465, V463, V464, W459, W460	5/8"	7-1/4"
SPECIALTY	510	49	est.	-	-	1/2"	7"
	525	53	est.	-	-	5/8"	7-1/4"
	527	53	est.	UL, 1 hour	U4251, U465, V463, V464, W459, W460	5/8"	7-1/4"
	528	53	est.	UL, 1 hour	V463, W459	5/8"	7-1/4"
	530	53	est.	UL, 1 hour	V463, V464, W459, W460	5/8"	7-1/4"
	545	60	est.	-	-	1-3/8"	8-3/4"

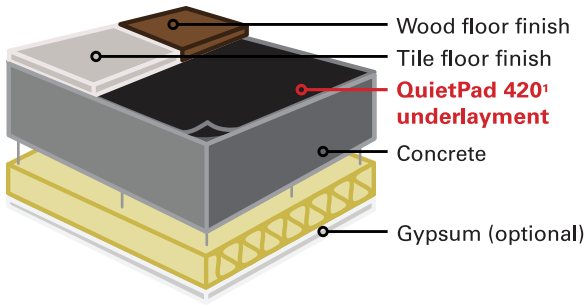
¹Load bearing wall assembly.

QuietRock sound damping drywall and other acoustical products available from Serious Energy. Visit www.QuietRock.com for more information.

All QuietRock and QuietWood panels are manufactured under one or more of the following US Patents: 7,181,891, 7,798,287 & 7,883,763.

The information contained in this document is for general information purposes only. Features and specifications are subject to change. The diagrams and stated STC ratings listed are intended to serve as a guide. Construction practices have an influence on final STC ratings. Serious Energy cannot guarantee actual STC ratings. Flanking sound patterns, the integrity of the wall, and floor and ceiling construction are important factors in effective sound control.

Floor/Ceiling Assemblies for Concrete Slab Construction



	IIC	Δ IIC	Report #
Tile floor over QuietPad	48	20 **	TL08-018
Tile floor over QuietPad plus ceiling*	63	-	TL08-012
Wood floor over QuietPad	54	26 **	TL08-001
Wood floor over QuietPad plus ceiling*	63	-	TL08-005

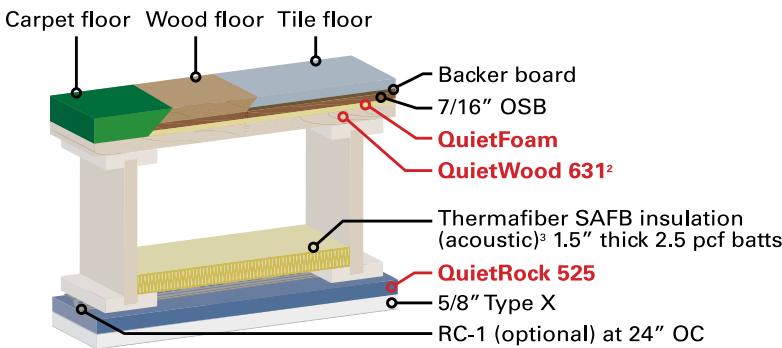
* Suspended gypsum ceiling
** IIC of 28 for 6" slab only

¹ 1/16" thick underlayment for concrete slab construction

QuietWood®

QuietWood® interior panels are based on proven and patented technology, which has a solid history of performance. Based on that demonstrated track record, Serious Energy backs the performance of QuietWood floor/ceiling panels with a one-year warranty against manufacturing defects.

QuietHome Floor/Ceiling Assemblies for Wood Frame Construction (I-Joist)



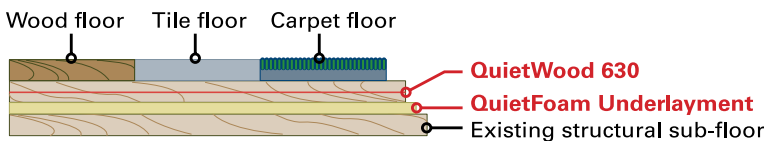
	STC	IIC	Report #	Fire	UL Design #
Wood*	63	59	OL07-0603	UL, 1 hour	L591
Tile*	65	58	OL07-0701	UL, 1 hour	L591
Carpet*	60	70	OL07-0602	UL, 1 hour	L591
Carpet (no RC)	51	64	OL07-0607	UL, 1 hour	L591

*Ceiling panels attached to RC at 24" OC

²Structurally-rated subfloor

³Fire testing completed with 1.5" thick 2.0 pcf mineral wool insulation

Low-Noise Floor Assembly (Retrofit)⁴



⁴Field testing available upon request

QuietWood sound damping wood panel offers easy and reliable noise reduction. QuietWood significantly reduces "high-heel footfall" noise and other problems associated with typical floor/ceiling assemblies. QuietWood is a multi-layer engineered panel made up of plywood and proprietary viscoelastic damping compound.

All QuietRock and QuietWood panels are manufactured under one or more of the following US Patents: 7,181,891, 7,798,287 & 7,883,763.

The information contained in this document is for general information purposes only. Features and specifications are subject to change. The diagrams and stated STC ratings listed are intended to serve as a guide. Construction practices have an influence on final STC ratings. Serious Energy cannot guarantee actual STC ratings. Flanking sound patterns, the integrity of the wall, and floor and ceiling construction are important factors in effective sound control.

© 2011 Energy, Inc. All rights reserved. Serious Energy, the Serious Energy logo, Quiet Solutions, QuietRock, QuietPutty, QuietSeal, QuietSeam, QuietWood, QuietFoam, QuietPad, QuietHome Windows, QuietHome, QuietGlue, QuietCoat, QuietTile and QuietRoom are trademarks or registered trademarks of Serious Energy, Inc. in the United States and other countries. Information subject to change without notice.